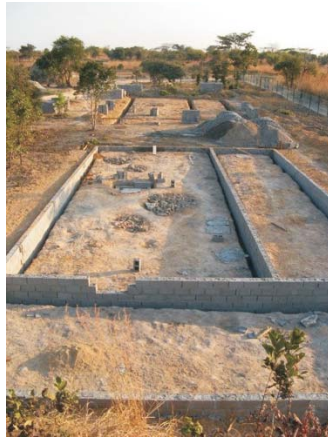


Dear Friends,

We are pleased to be able to share with you progress on the building site for the street children at Kasompe. Your prayers are very much valued as we face the day to day challenges.

FOUNDATIONS

Initially the foundations were dug out for hostels 1 and 2. The concrete was then poured and foundation walls were constructed. Delays in the arrival of laterite has slowed down progress on hostel 2, so we started digging the foundations for hostel 5 followed by pouring concrete and construction of the foundation walls. Hostel 4 followed on and the concrete has just been poured for the foundations.



Hostel 5 (near) Hostel 4 (far)

CONCRETE SLAB

Once the foundation walls had been completed and the laterite compacted into the foundations of hostel 1 we were ready to pour the concrete slab. Form work was constructed around the perimeter of the building to create an overhang mould. The slab was poured in seven sections. Cement mixed in one mixer and manually wheelbarrowed to the slab to be poured. The slab on hostel 2 will be poured in the next few weeks, now that the laterite has arrived and is compacted into the footings.



WELL

We have completely submerged the six concrete rings. We have been able to pump up to 5000 litres at a time to the tank on the anthill, however this is reducing as the dry season goes on. We are expecting the final two rings to be delivered this week so that we can make the well deeper. The water availability on site is essential for the building work and cooking daily for the local workers.



CEMENT

We order cement direct from the factory in Ndola, 120km away. A local purchase order and payment has to be taken to the sales office for which we receive a receipt. We then have to wait eight working days for the order to be processed and an invoice raised. Once in place the transporter is notified who arranges for collection of our cement. This can take two or three days queueing! Quite often this whole process takes 3 weeks!! So far we have used around 980 x 50kg bags of cement. It is ordered in bulk loads of 800 x 50kg bags.



BRASS TACKS TEAM

We have recently had Phil Kennedy, Bob Loveridge, Dave Thorpe and Roger Mullan here. Its great to be able to have them working with us in this project. They work hard having to adapt to many different circumstances, such as the heat and of course a bit of the Zambian culture!

Colin Breeze is out at the moment and travelled to Nyangombe Christian Training Centre to make widow frames for Hostel 2 and will be back down this week. Jim Smith travels back to Zambia next week.



COOKING FOR THE WORKERS

Each day the workers on site have a meal of nshima, dried fish or beans cooked for them. Work starts at 0730 after a time of devotions taken by some of the workers themselves.





LATERITE

Laterite is used as back-fill material in the foundations to give a good solid footing for the building slab. Many roads in Zambia are made from this material. It is compacted into the base in layers up to the top of the foundation wall.

Local trucking company, Zalawi, delivered around 200 tons free of charge, from a nearby public quarry, enough to fill the base of Hostel 2.



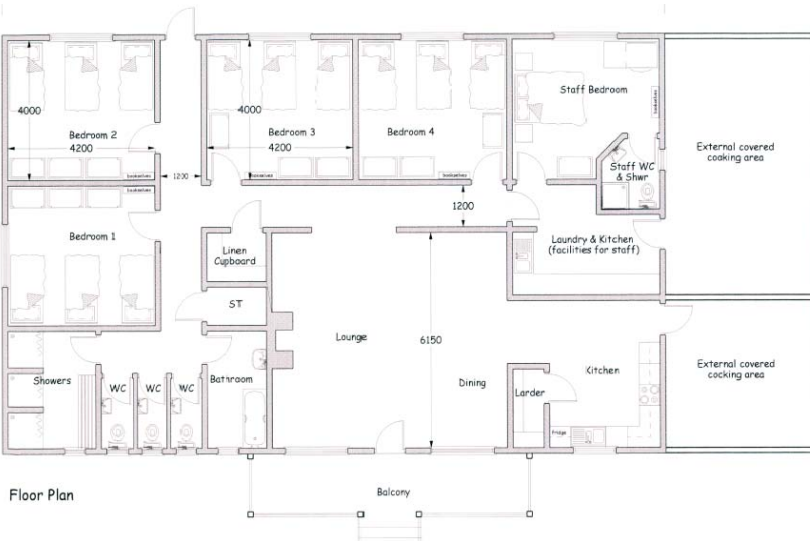
5th May 2008



12th May 2008



17th May 2008



HOSTEL LAYOUT

Each hostel is to have 4 bedrooms, washrooms, lounge and kitchen for the children. Each bedroom will have 3 or 4 beds depending on layout. There will be accommodation for staff who will be responsible for the day to day needs and care of the children.

POINTS FOR PRAYER

- Thanks for continued progress despite set backs.
- Eagerness and interest of workers.
- Brass Tacks support for this project.
- Opportunities to witness to local business people.
- Thanks for letter from council to Ministry of Lands in order to complete the deeds application.
- Safety on site during the day for protection of the site at night.
- Morning devotions and outreach to workers.
- Obtaining cement, building sand and stone in good time.
- Completion of the Deeds application to Ministry of Lands.
- Patience in dealing with the slow delivery of supplies.

With Christian Greetings,

Kelvin & Joyce Samwata and Philip & Deborah Cole



14th Jun 2008



27th June 2008