

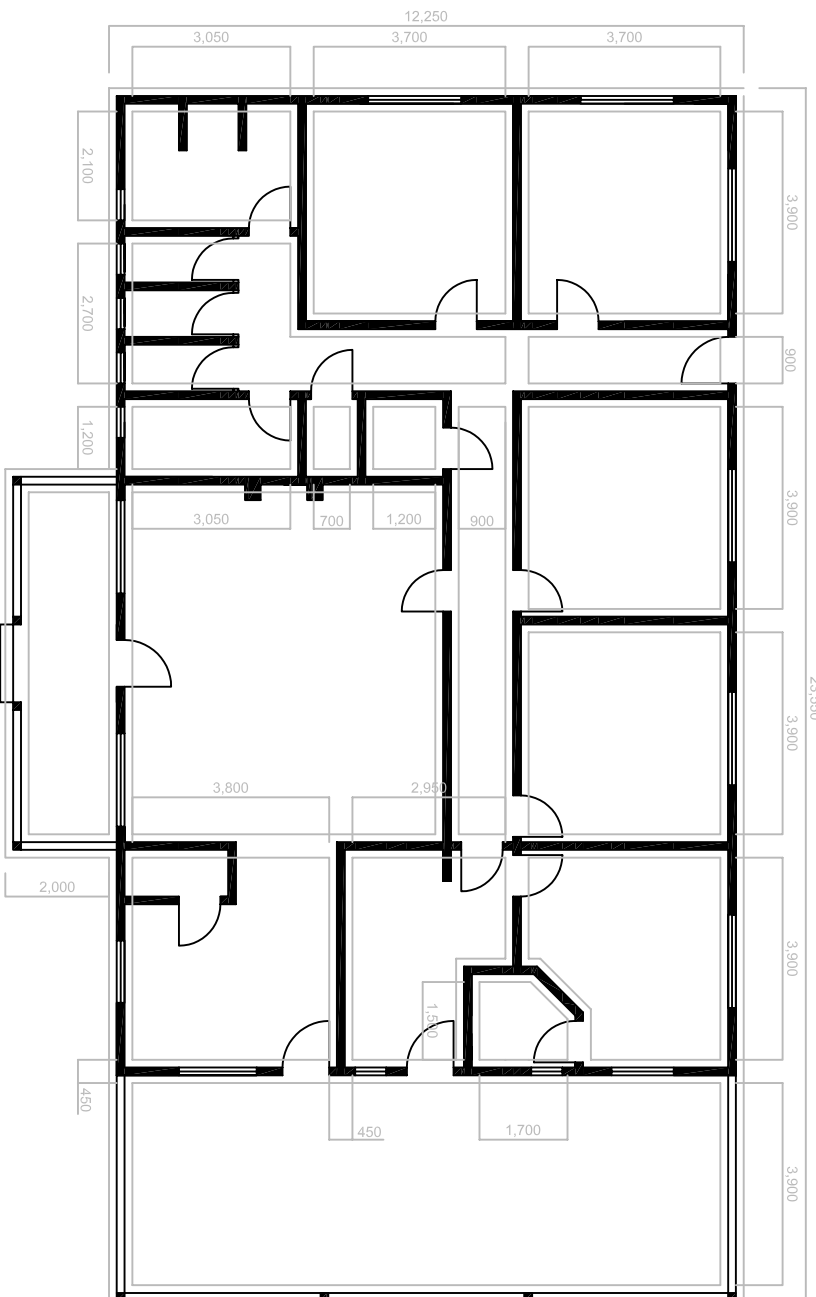
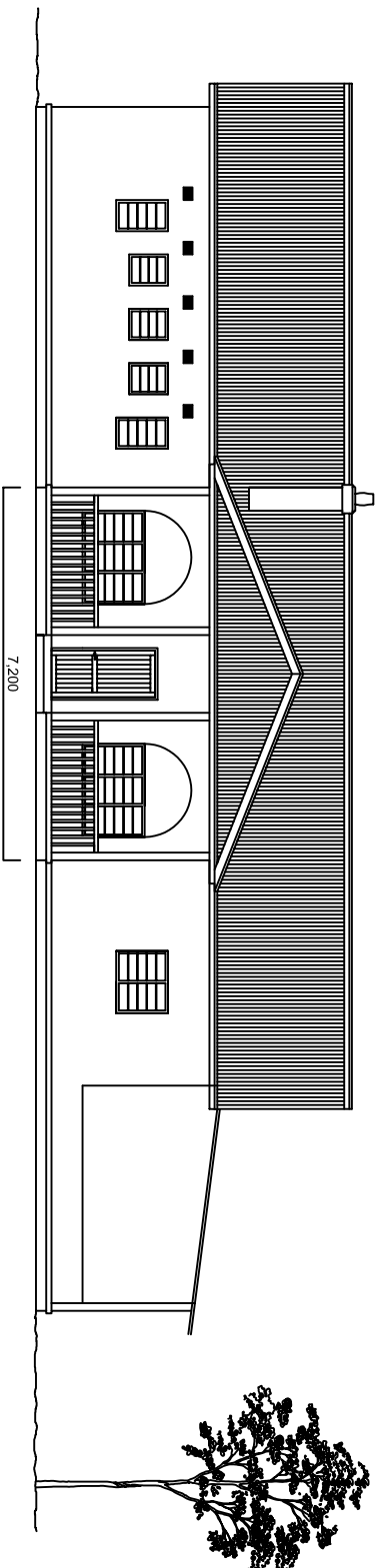
## Notes

The plans have been slightly amended from the original ones in a number of ways as indicated below.

1. Porch reduced in width so foundations line up with other trenches.
2. A door has been introduced to the lounge rather than an opening, for purposes of basic fire safety - to protect the bedroom corridor.
3. The front porch has been shown as a hipped roof, as a gable would be more difficult to construct.

## Recommendations

1. Introduce expansion joints throughout the structure on a grid of approximately 6metres. Joints should be both in the floor slab and walls, using appropriate connecting sleeved bars in the slab and sleeved wall ties above ground.
2. Allow for a soil vent pipe to each bulkhead terminating at least 900mm above nearby windows and air vents.
3. Consider using concrete or hydrotorn blocks rather than mud fired clay bricks to internal walls in places where strong fixings for shelves / services are required.
4. Allow for mains smoke detectors (so batteries will not be removed) in the Lounge, and at each end of the bedroom corridor.
5. Provide mains rate of rise heat detector in the staff kitchen.
6. Consider fitting two emergency lights - one in the bedroom corridor and another in the lounge.
7. Provide at least a 6 litre AFFF or CO2 fire extinguisher in the corridor or lounge.
8. Provide a 1,2 x 1,2 metre fire blanket in each kitchen but away from the hob.
9. The chimney should really be constructed higher than the ridge.
10. Try to avoid all surface mounted services as the conduits tend to pull free with time if using the local mud fired clay brick.
11. Consider lightning conductor taken down the gable from the ridge flashing with an earthing rod.
12. The central corridor has little natural light. It might be worth fitting a 'sun pipe', which comes already with its own flashing kit. This could also be done retrospectively.



	Insulite Childrens Centre, Oryemba, Zambia.
	New accommodation bungalow.

Proposed Plans / Elevations.

15 Alambalimbe Road  
021 7546 2484  
Scale 1:100